

Landscape Lighting Catalog



Hanging Lights

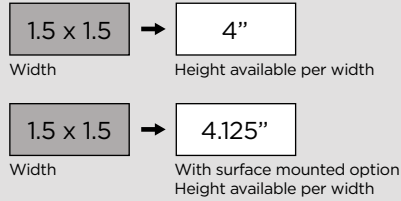
PENDANT LITERS



Halo Design

Hanging Lights | Pendantlites

Nightscaping's Halo pendantlitter features a sleek minimalistic design that provides subtle illumination from above. The Halo mini pendant lights are a versatile and stylish lighting solution, perfect for a variety of outdoor living spaces. These compact fixtures, often used in clusters, can add a touch of elegance and focused illumination to outdoor dining areas, kitchen spaces, and lanais. Their small size makes them ideal for accent lighting, highlighting specific areas or features without overwhelming the space.



MATERIAL

Nightscaping's® Pendantlites are constructed from solid brass and 6061 aluminum tubing. The brass center body is easily removable with two small set screws. This creates easy access to the luminaire's LED module.

FINISHES



Copper Vein

The Pendantlites are finished with Nightscaping's coppervein powder coat and antique brass finish. This allows the luminaire to blend seamlessly into the landscape and surrounding areas.



MOUNTING OPTIONS

The Pendantlites can be mounted with Nightscaping's® optional brass surface mount. The brass surface mount can be mounted to a solid surface using the Stainless Steel mounting screws included with each luminaire. (please see Installation Instructions for details).

WIRING

35ft 18AWG, UL Listed, copper wire that is protected by Black Polyvinyl Chloride (PVC).

LAMP

Comes standard with Nightscaping's® 3.5W LED module - 180 Lumens (without honeycomb louver installed) or 100 Lumens (with honeycomb louver installed).

OPTIMAL VOLTAGE

Recommended voltage range for 12V LEDs is 11V - 15V components.

Nightscaping[®]
SINCE 1959

RECOMMENDED LAMP
3.5W
LED module
180 OR 100 LUMENS

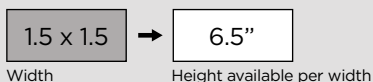
12V
11V-15V

STRUCTURAL LIFETIME
★ ★ ★
WARRANTY

Ivy Design

Hanging Lights | Pendantlites

Nightscaping's Ivy Design Pendantlite features a frosted inner diffusion tube wrapped in a delicate leaf inspired form. The Ivy Pendantlite proves a multi-directional source of light that is perfect to hang over tables or mount directly in garden structures. The Ivy design is in perfect harmony with the leafy elements of the garden and pairs perfectly in theme with Nightscaping's line of decorative bollards and path lights in the same Ivy design.



MATERIAL

Nightscaping's® Pendantlites are constructed from solid brass and 6061 aluminum tubing. The brass center body is easily removable with two small set screws. This creates easy access to the luminaire's LED module.

FINISHES



Copper Vein

The Pendantlites are finished with Nightscaping's coppervein powder coat and antique brass finish. This allows the luminaire to blend seamlessly into the landscape and surrounding areas.



MOUNTING OPTIONS

The Pendantlites can be mounted with Nightscaping's® optional brass surface mount. The brass surface mount can be mounted to a solid surface using the Stainless Steel mounting screws included with each luminaire. (please see Installation Instructions for details).

WIRING

35ft 18AWG, UL Listed, copper wire that is protected by Black Polyvinyl Chloride (PVC).

LAMP

Comes standard with Nightscaping's® 3.5W LED module - 170 Lumens (without acrylic lens) or 120 Lumens (with acrylic lens installed).

OPTIMAL VOLTAGE

Recommended voltage range for 12V LEDs is 11V - 15V components.

Nightscaping[®]
SINCE 1959

RECOMMENDED LAMP
3.5W
LED module
170 OR 120 LUMENS

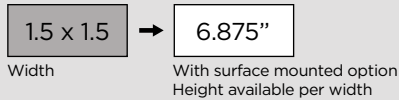
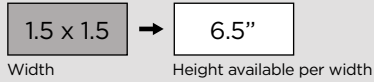
12V
11V-15V

STRUCTURAL LIFETIME
★ ★ ★
WARRANTY

Luna Design

Hanging Lights | Pendantliters

Nightscaping's Luna Pendantlitter features a slim design with a fully frosted end to provide soft, multi-directional illumination. The Luna is ideal for areas where a non-directional light source can be utilized to add a soft, diffused glow to an area providing even illumination within garden and patio spaces. Pair the luna with the fixed base accessory under a pergola or patio cover and Luna becomes a practical area light, providing a soft ambient light for a variety of evening activities and get togethers.



MATERIAL

Nightscaping's® Pendantliters are constructed from solid brass and 6061 aluminum tubing. The brass center body is easily removable with two small set screws. This creates easy access to the luminaire's LED module.

FINISHES



Copper Vein

The Pendantliters are finished with Nightscaping's copper vein powder coat and antique brass finish. This allows the luminaire to blend seamlessly into the landscape and surrounding areas.



MOUNTING OPTIONS

The Pendantliters can be mounted with Nightscaping's® optional brass surface mount. The brass surface mount can be mounted to a solid surface using the Stainless Steel mounting screws included with each luminaire. (please see Installation Instructions for details).

WIRING

35ft 18AWG, UL Listed, copper wire that is protected by Black Polyvinyl Chloride (PVC).

LAMP

Comes standard with Nightscaping's® 3.5W LED module - 125 Lumens.

OPTIMAL VOLTAGE

Recommended voltage range for 12V LEDs is 11V - 15V components.

Nightscaping
SINCE 1959

RECOMMENDED LAMP
3.5W
LED module
125 LUMENS

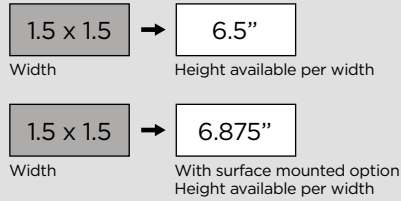
12V
11V-15V

STRUCTURAL LIFETIME
★ ★ ★
WARRANTY

Weave Design

Hanging Lights | Pendantlites

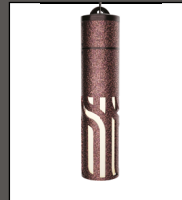
Nightscaping's Weave Design Pendantlite features a frosted inner diffusion tube wrapped in a uniquely designed, weave form for a modern aesthetic. The Weave pendantlite provides subtle, multi-directional illumination that is perfect for use over outdoor bars and seating areas, providing a classy touch in a highly compact form.



MATERIAL

Nightscaping's® Pendantlites are constructed from solid brass and 6061 aluminum tubing. The brass center body is easily removable with two small set screws. This creates easy access to the luminaire's LED module.

FINISHES



Copper Vein

The Pendantlites are finished with Nightscaping's copper vein powder coat and antique brass finish. This allows the luminaire to blend seamlessly into the landscape and surrounding areas.



MOUNTING OPTIONS

The Pendantlites can be mounted with Nightscaping's® optional brass surface mount. The brass surface mount can be mounted to a solid surface using the Stainless Steel mounting screws included with each luminaire. (please see Installation Instructions for details).

WIRING

35ft 18AWG, UL Listed, copper wire that is protected by Black Polyvinyl Chloride (PVC).

LAMP

Comes standard with Nightscaping's® 3.5W LED module - 170 Lumens (without acrylic lens) or 118 Lumens (with acrylic lens installed)

OPTIMAL VOLTAGE

Recommended voltage range for 12V LEDs is 11V - 15V components.

Nightscaping
SINCE 1959

RECOMMENDED LAMP
3.5W
LED module
170 OR 118 LUMENS

12V
11V-15V

STRUCTURAL LIFETIME
★ ★ ★
WARRANTY

Bistro Series



Bistro Lights

Bistro Lights

Nightscaping® 38 ft. 8V-36V AC dimmable LED bistro fixed socket string lights are the perfect addition to your backyard, patio, or garden. These UL Listed bistro lights are coated in a tough rubber casing so they will withstand even the toughest weather conditions. Our heavy-duty 14AWG SJTW rated cable is well insulated so you can leave them outside all year long. Our bistro light kit includes 18 standard sockets. You can choose from 1W, 2W, or 4W S14 LED lamps that shine with a warm glow to create an inviting atmosphere for parties, events, or just relaxing at home.



FEATURES

- **Voltage Input:** 8V-36V AC.
- **Length:** 38-foot length strands or 250 Spool.
- **Lamp Options:** Choice of 20 high quality 1W, 2W, 4W dimmable 2700K LED lamps.
- **Sockets:** 18 S14 Fixed Socket or Suspended Socket.
- **Wire:** Durable, 14AWG, heavy-duty, flexible rubber, built to withstand any weather condition.
- **Weatherproof:** Nightscaping's string lights are guaranteed to last through any weather condition, rain, wind, or snow.



add-on

Twinkler Bistoliter



Nightscaping®
SINCE 1959

5 YEAR WARRANTY
★ ★ ★

LAMP OPTIONS
1W-2W
4W



Twinkler Bistoliter

Bistro Light Add-on

The Nightscaping® Twinkler Bistoliter is an aftermarket snap-on design lamp shade that fits on to 99% of professional-grade bistro lighting kits sold at your local home improvement or lighting showrooms. Installs in seconds and is a great way to dress up your bistro lights!

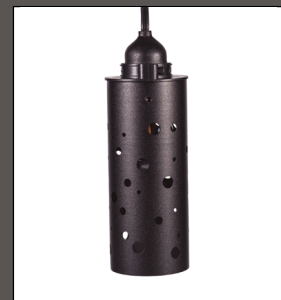
Each purchase of Twinkler Bistoliters comes with 6 lamp shades.



FEATURES

- Each purchase of Twinkler Bistoliters comes with 6 lamp shades
- Easy Clamp On Design
- Fits 99% Of Professional Grade Bistro Light Kits
- Wind & Weather Proof
- Eliminate Unwanted Light Glare
- Powder Coated Aluminum Lamp Shade
- Solid Design With Set Screws - Will Never Fall Off
- Perfect For Restaurants, Hotels & Backyard Settings
- Multi-Configuration Based On Your Design Needs/Wants
- Allows For Area Brightness Customization
- Helps To Eliminate Light Pollution
- Proudly Designed In West Chester, PA, USA

Finishes



Black

Nightscaping[®]
SINCE 1959

5 YEAR WARRANTY
★ ★ ★

LAMP OPTIONS
1W-2W
4W





Nightscaping® Lightning Protection Device

Surge Protection Series

The Nightscaping® Lightning Protection Device is a Type 1 device, designed for outdoor applications. Engineered for both AC and DC electric systems, it protects both magnetic and electronic power supplies and LED/ Incandescent luminaires without interfering with the GFP protection circuit, it provides protection to service panels, load centers or where the Lightning Protection Device is directly connected to the electronic device(s) requiring protection.

Note: Maximum protection will only be achieved if the Lightning Protection Device is properly installed. Please read the Lightning Protection Device installation manual carefully and follow the instructions.

The Nightscaping® Lightning Protection Device provides maximum protection by reducing the clamping voltage to a safe voltage that your system can sustain without damaging any of the electrical components. Installing the Nightscaping® Lightning Protection Device will provide excellent protection and peace of mind for many years to come.

Features

ETL Listed

UL 1449 Type 1 Compliant

80 KA at 8/20 Pulse

Waterproof

Blue LED Indicator When "ON"

1/2" NPT Thread - Fits Standard Ground Stake

Protects Unlimited Number Of Luminaires

Proudly Designed & Made In Arlington, WA, USA

Other features

NOMINAL VOLTAGE: 0 to 90VAC & 0 to 115VDC

MCOV VRMS @ 1mA: 180V (162-198)

CLAMP V @ 100A CURRENT 8/20 PULSE: 295V

ENERGY ABSORPTION: 1120J (Full Device)

OPERATING TEMPERATURE: -40°C To +85°C

NOMINAL DISCHARGE CURRENT: 20kA

THERMAL DISCONNECTOR: Internal

RESPONSE TIME: <15n sec



DANGER: Electrical shock or burn hazard. Installation of this Lightning Protection Device should only be done by qualified personnel. Failure to lockout electrical power during installation or maintenance can result in fatal electrocution or severe burns.



CAUTION: This unit must be installed in accordance with the National Electrical Code (ANSI/NFPA-70) and applicable local codes.



CAUTION: Ungrounded power systems are inherently unstable and can allow excessively high line-to-ground voltages during certain fault conditions. During these fault conditions any electrical equipment, including a Lightning Protection Device, may be subjected to voltages which exceed their designed ratings. This information is being provided to the user so that an informed decision can be made before installing any electrical equipment on an ungrounded power system.

Please note Ground Rod Electrode (GRE) not included with NSPD. Refer to NEC code for length of GRE.

Nightscaping®
SINCE 1959

