

# Landscape Lighting Catalog



# Index

<b>Hanging Lights</b> .....	<b>3</b>	Wexford 100 .....	38
Halo Design .....	4	<b>Rail, Deck &amp; Dock Lights</b> .....	<b>39</b>
Ivy Design .....	5	Richmond .....	40
Luna Design .....	6	Columbia .....	41
Weave Design .....	7	Oxford .....	42
<b>Bistro Series</b> .....	<b>8</b>	<b>Step Lights</b> .....	<b>43</b>
Bistro Lights .....	9	Strasburg .....	44
Twinkler Bistoliter .....	10	Brandywine .....	45
<b>Directional &amp; Up Lights</b> .....	<b>11</b>	Wyndmoor .....	46
Lucia .....	12	Pennsburg .....	47
Cayman .....	13	Avondale .....	48
Trinidad .....	14	<b>Path &amp; Area Lights</b> .....	<b>49</b>
Tobago .....	15	Stockholm .....	50
Grenada .....	16	Copenhagen .....	51
Jamaica .....	17	Athens .....	52
<b>In-Grade</b> .....	<b>18</b>	Brussels .....	53
Bruteliter III .....	19	Oslo .....	54
Yellowstone .....	20	Sofia .....	55
El Tatio .....	21	Venice .....	56
Glenwood .....	22	Warsaw .....	57
Olympic .....	23	Amsterdam .....	58
Pica .....	24	Berlin .....	59
Saratoga .....	25	Paris .....	60
Toscana .....	26	Monaco .....	61
Beehive .....	27	Drammen .....	62
Riverside .....	28	Valletta .....	63
Strokkur .....	29	Barcelona .....	64
<b>Wash Lights</b> .....	<b>30</b>	Arendal .....	65
Aruba .....	31	Luxembourg .....	66
Antigua .....	32	Naples .....	67
<b>Hardscape Lights</b> .....	<b>33</b>	<b>Specialty Lights</b> .....	<b>68</b>
Washington .....	34	Caspian .....	69
Windsor .....	35	Providence .....	70
Marion .....	36	Conestoga .....	71
Wexford 50 .....	37	Fulton .....	72

# Hanging Lights

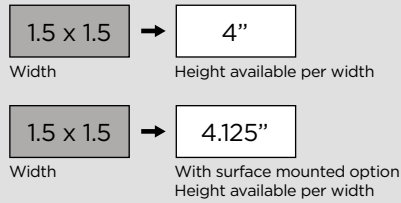
## PENDANT LITERS



# Halo Design

## Hanging Lights | Pendantlites

Nightscaping's Halo pendantlitter features a sleek minimalistic design that provides subtle illumination from above. The Halo mini pendant lights are a versatile and stylish lighting solution, perfect for a variety of outdoor living spaces. These compact fixtures, often used in clusters, can add a touch of elegance and focused illumination to outdoor dining areas, kitchen spaces, and lanais. Their small size makes them ideal for accent lighting, highlighting specific areas or features without overwhelming the space.



## MATERIAL

Nightscaping's® Pendantlitters are constructed from solid brass and 6061 aluminum tubing. The brass center body is easily removable with two small set screws. This creates easy access to the luminaire's LED module.

## FINISHES



Copper Vein

The Pendantlitters are finished with Nightscaping's coppervein powder coat and antique brass finish. This allows the luminaire to blend seamlessly into the landscape and surrounding areas.



## MOUNTING OPTIONS

The Pendantlitters can be mounted with Nightscaping's® optional brass surface mount. The brass surface mount can be mounted to a solid surface using the Stainless Steel mounting screws included with each luminaire. (please see Installation Instructions for details).

## WIRING

35ft 18AWG, UL Listed, copper wire that is protected by Black Polyvinyl Chloride (PVC).

## LAMP

Comes standard with Nightscaping's® 3.5W LED module - 180 Lumens (without honeycomb louver installed) or 100 Lumens (with honeycomb louver installed).

## OPTIMAL VOLTAGE

Recommended voltage range for 12V LEDs is 11V - 15V components.

*Nightscaping*<sup>®</sup>  
SINCE 1959

RECOMMENDED LAMP  
**3.5W**  
LED module  
180 OR 100 LUMENS

**12V**  
11V-15V

STRUCTURAL LIFETIME  
★ ★ ★  
WARRANTY

# Ivy Design

Hanging Lights | Pendantlites

Nightscaping's Ivy Design Pendantlite features a frosted inner diffusion tube wrapped in a delicate leaf inspired form. The Ivy Pendantlite proves a multi-directional source of light that is perfect to hang over tables or mount directly in garden structures. The Ivy design is in perfect harmony with the leafy elements of the garden and pairs perfectly in theme with Nightscaping's line of decorative bollards and path lights in the same Ivy design.



## MATERIAL

Nightscaping's® Pendantlites are constructed from solid brass and 6061 aluminum tubing. The brass center body is easily removable with two small set screws. This creates easy access to the luminaire's LED module.

## FINISHES



Copper Vein

The Pendantlites are finished with Nightscaping's copper vein powder coat and antique brass finish. This allows the luminaire to blend seamlessly into the landscape and surrounding areas.



## MOUNTING OPTIONS

The Pendantlites can be mounted with Nightscaping's® optional brass surface mount. The brass surface mount can be mounted to a solid surface using the Stainless Steel mounting screws included with each luminaire. (please see Installation Instructions for details).

## WIRING

35ft 18AWG, UL Listed, copper wire that is protected by Black Polyvinyl Chloride (PVC).

## LAMP

Comes standard with Nightscaping's® 3.5W LED module - 170 Lumens (without acrylic lens) or 120 Lumens (with acrylic lens installed).

## OPTIMAL VOLTAGE

Recommended voltage range for 12V LEDs is 11V - 15V components.

*Nightscaping*  
SINCE 1959

RECOMMENDED LAMP  
**3.5W**  
LED module  
170 OR 120 LUMENS

**12V**  
11V-15V

STRUCTURAL LIFETIME  
★ ★ ★  
WARRANTY

# Luna Design

Hanging Lights | Pendantliters

Nightscaping's Luna Pendantlitter features a slim design with a fully frosted end to provide soft, multi-directional illumination. The Luna is ideal for areas where a non-directional light source can be utilized to add a soft, diffused glow to an area providing even illumination within garden and patio spaces. Pair the luna with the fixed base accessory under a pergola or patio cover and Luna becomes a practical area light, providing a soft ambient light for a variety of evening activities and get togethers.



## MATERIAL

Nightscaping's® Pendantliters are constructed from solid brass and 6061 aluminum tubing. The brass center body is easily removable with two small set screws. This creates easy access to the luminaire's LED module.

## FINISHES



Copper Vein

The Pendantliters are finished with Nightscaping's coppervein powder coat and antique brass finish. This allows the luminaire to blend seamlessly into the landscape and surrounding areas.



## MOUNTING OPTIONS

The Pendantliters can be mounted with Nightscaping's® optional brass surface mount. The brass surface mount can be mounted to a solid surface using the Stainless Steel mounting screws included with each luminaire. (please see Installation Instructions for details).

## WIRING

35ft 18AWG, UL Listed, copper wire that is protected by Black Polyvinyl Chloride (PVC).

## LAMP

Comes standard with Nightscaping's® 3.5W LED module - 125 Lumens.

## OPTIMAL VOLTAGE

Recommended voltage range for 12V LEDs is 11V - 15V components.

*Nightscaping*  
SINCE 1959

RECOMMENDED LAMP  
**3.5W**  
LED module  
125 LUMENS

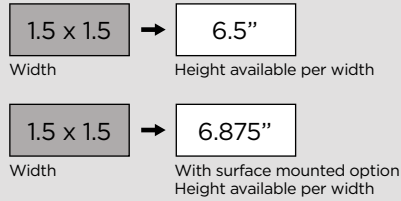
**12V**  
11V-15V

STRUCTURAL LIFETIME  
★ ★ ★  
WARRANTY

# Weave Design

Hanging Lights | Pendantlites

Nightscaping's Weave Design Pendantlite features a frosted inner diffusion tube wrapped in a uniquely designed, weave form for a modern aesthetic. The Weave pendantlite provides subtle, multi-directional illumination that is perfect for use over outdoor bars and seating areas, providing a classy touch in a highly compact form.



## MATERIAL

Nightscaping's® Pendantlites are constructed from solid brass and 6061 aluminum tubing. The brass center body is easily removable with two small set screws. This creates easy access to the luminaire's LED module.

## FINISHES



Copper Vein

The Pendantlites are finished with Nightscaping's coppervein powder coat and antique brass finish. This allows the luminaire to blend seamlessly into the landscape and surrounding areas.



## MOUNTING OPTIONS

The Pendantlites can be mounted with Nightscaping's® optional brass surface mount. The brass surface mount can be mounted to a solid surface using the Stainless Steel mounting screws included with each luminaire. (please see Installation Instructions for details).

## WIRING

35ft 18AWG, UL Listed, copper wire that is protected by Black Polyvinyl Chloride (PVC).

## LAMP

Comes standard with Nightscaping's® 3.5W LED module - 170 Lumens (without acrylic lens) or 118 Lumens (with acrylic lens installed)

## OPTIMAL VOLTAGE

Recommended voltage range for 12V LEDs is 11V - 15V components.

*Nightscaping*  
SINCE 1959

RECOMMENDED LAMP  
**3.5W**  
LED module  
170 OR 118 LUMENS

**12V**  
11V-15V

STRUCTURAL LIFETIME  
★ ★ ★  
WARRANTY

# Bistro Series





# Bistro Lights

## Bistro Lights

Nightscaping® 38 ft. 8V-36V AC dimmable LED bistro fixed socket string lights are the perfect addition to your backyard, patio, or garden. These UL Listed bistro lights are coated in a tough rubber casing so they will withstand even the toughest weather conditions. Our heavy-duty 14AWG SJTW rated cable is well insulated so you can leave them outside all year long. Our bistro light kit includes 18 standard sockets. You can choose from 1W, 2W, or 4W S14 LED lamps that shine with a warm glow to create an inviting atmosphere for parties, events, or just relaxing at home.



## FEATURES

- **Voltage Input:** 8V-36V AC.
- **Length:** 38-foot length strands or 250 Spool.
- **Lamp Options:** Choice of 20 high quality 1W, 2W, 4W dimmable 2700K LED lamps.
- **Sockets:** 18 S14 Fixed Socket or Suspended Socket.
- **Wire:** Durable, 14AWG, heavy-duty, flexible rubber, built to withstand any weather condition.
- **Weatherproof:** Nightscaping's string lights are guaranteed to last through any weather condition, rain, wind, or snow.



### add-on

Twinkler Bistoliter



*Nightscaping*®  
SINCE 1959

5 YEAR WARRANTY  
★ ★ ★

LAMP OPTIONS  
1W-2W  
4W



# Twinkler Bistoliter

## Bistro Light Add-on

The Nightscaping® Twinkler Bistoliter is an aftermarket snap-on design lamp shade that fits on to 99% of professional-grade bistro lighting kits sold at your local home improvement or lighting showrooms. Installs in seconds and is a great way to dress up your bistro lights!

Each purchase of Twinkler Bistoliters comes with 6 lamp shades.



## FEATURES

- Each purchase of Twinkler Bistoliters comes with 6 lamp shades
- Easy Clamp On Design
- Fits 99% Of Professional Grade Bistro Light Kits
- Wind & Weather Proof
- Eliminate Unwanted Light Glare
- Powder Coated Aluminum Lamp Shade
- Solid Design With Set Screws - Will Never Fall Off
- Perfect For Restaurants, Hotels & Backyard Settings
- Multi-Configuration Based On Your Design Needs/Wants
- Allows For Area Brightness Customization
- Helps To Eliminate Light Pollution
- Proudly Designed In West Chester, PA, USA

## Finishes



Black

*Nightscaping*®  
SINCE 1999

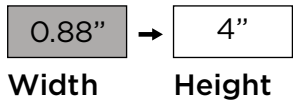
5 YEAR WARRANTY  
★ ★ ★

LAMP OPTIONS  
1W-2W  
4W



# Directional & Up Lights





# Lucia

## Brass Drop-In

The Lucia Sidera Series brass LED MR-8, drop-in, directional up-light by Nightscaping is ideal for illuminating small niche features in any garden space. The Lucia features an adjustable shroud to achieve the perfect beam spread or to control light glare.



## Specifications

### HOUSING:

Cast brass. Screw on top cap with adjustable shroud with tension screw.

### SOCKET/LAMP HOLDER:

Fixed ceramic bi-pin socket.

### LENS:

Clear flat tempered glass lens.

### LAMP TYPE:

12V MR8. LED recommended. 35W halogen or 6W LED maximum.

### MOUNTING:

1/2" NPT threaded stem. Heavy-duty composite stake included with slotted brass threaded insert for easy servicing. Luminaire may be mounted into threaded junction boxes or mounting accessories.

### WIRING:

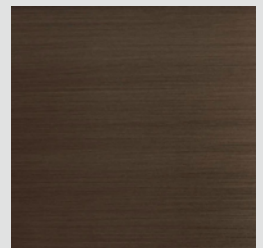
25ft 18/2AWG, SPT-2, UL Listed, copper wire that is protected by Polyvinyl Chloride (PVC).

LIFETIME



WARRANTY

FINISH



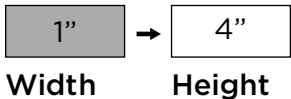
Weathered brass

*Nightscaping*<sup>®</sup>  
SINCE 1959

# Cayman

Brass Drop-In

The Cayman Sidera Series brass LED MR-11, drop-in, directional up-light by Nightscaping is ideal for illuminating small decorative trees or garden art. The Cayman features an adjustable shroud to achieve the perfect beam spread or to control light glare.



## Specifications

### HOUSING:

Cast brass. Screw on top cap with adjustable shroud with tension screw.

### SOCKET/LAMP HOLDER:

Fixed ceramic bi-pin socket.

### LENS:

Clear flat tempered glass lens.

### LAMP TYPE:

12V MR11. LED recommended. 35W halogen or 6W LED maximum.

### MOUNTING:

1/2" NPT threaded stem. Heavy-duty composite stake included with slotted brass threaded insert for easy servicing. Luminaire may be mounted into threaded junction boxes or mounting accessories.

### WIRING:

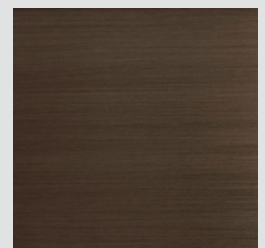
25ft 18/2AWG, SPT-2, UL Listed, copper wire that is protected by Polyvinyl Chloride (PVC).

LIFETIME



WARRANTY

FINISH



Weathered brass

Nightscaping®  
SINCE 1959

# Trinidad

## Brass Drop-In

The Trinidad Sidera Series brass LED MR-16, drop-in, directional bullet light by Nightscaping is ideal for illuminating tall trees, grazing buildings, or backlighting distant trees and shrubs. Use this luminaire anywhere a highly controlled, stake mounted up-light is needed. The Trinidad bullet light is constructed of solid cast brass and is fully adjustable which allows precise aiming and positioning to create the perfect lighting for any project.



## Specifications

### HOUSING:

Cast brass. Lock-and-load shroud with O-rings.

### SOCKET/LAMP HOLDER:

Spring loaded ceramic bi-pin socket with stainless steel retaining springs.

### LENS:

Clear convex tempered glass lens.

### LAMP TYPE:

12V MR16. LED recommended. 35W halogen or 7W LED maximum.

### MOUNTING:

1/2" NPT threaded stem. Heavy-duty composite stake included with slotted brass threaded insert for easy servicing. Luminaire may be mounted into threaded junction boxes or mounting accessories.

### WIRING:

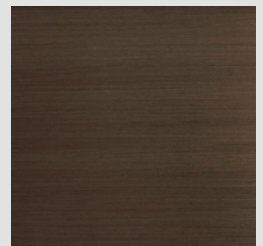
25ft 18/2AWG, SPT-2, UL Listed, copper wire that is protected by Polyvinyl Chloride (PVC).

LIFETIME



WARRANTY

FINISH



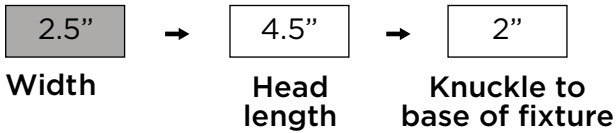
Weathered brass

*Nightscaping*<sup>®</sup>  
SINCE 1959

# Tobago

Brass Drop-In

The Tobago Sidera Series brass LED MR-16, drop-in, directional bullet light by Nightscaping is ideal for illuminating tall trees, grazing buildings, or backlighting distant trees and shrubs. Use this luminaire anywhere a highly controlled, stake mounted up-light is needed. The Tobago bullet light is constructed of solid cast brass and is fully adjustable which allows precise aiming and positioning to create the perfect lighting for any project.



## Specifications

### HOUSING:

Cast brass. Lock-and-load shroud with O-rings.

### SOCKET/LAMP HOLDER:

Fixed ceramic bi-pin socket with stainless steel retaining springs.

### LENS:

Clear convex tempered glass lens.

### LAMP TYPE:

12V MR16. LED recommended. 35W halogen or 7W LED maximum.

### MOUNTING:

1/2" NPT threaded stem. Heavy-duty composite stake included with slotted brass threaded insert for easy servicing. Luminaire may be mounted into threaded junction boxes or mounting accessories.

### WIRING:

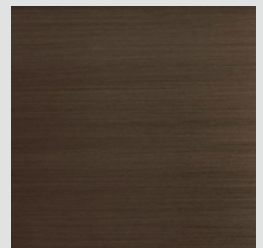
25ft 18/2AWG, SPT-2, UL Listed, copper wire that is protected by Polyvinyl Chloride (PVC).

LIFETIME



WARRANTY

FINISH



Weathered brass

*Nightscaping*<sup>®</sup>  
SINCE 1959

# Grenada

## Brass Drop-In

The Grenada Sidera Series brass LED MR-16, drop-in, directional bullet light by Nightscaping is ideal for illuminating tall trees, grazing buildings, or backlighting distant trees and shrubs. Use this luminaire anywhere a highly controlled, stake mounted up-light is needed. The Grenada bullet light is constructed of solid brass and is fully adjustable which allows for precise aiming. The luminaire also features an adjustable shroud to achieve the perfect beam spread or to control light glare.



## Specifications

### HOUSING:

Cast brass. Screw on top cap with adjustable shroud with tension screw.

### SOCKET/LAMP HOLDER:

Fixed ceramic bi-pin socket with stainless steel retaining springs.

### LENS:

Clear convex tempered glass lens.

### LAMP TYPE:

12V MR16. LED recommended. 35W halogen or 7W LED maximum.

### MOUNTING:

1/2" NPT threaded stem. Heavy-duty composite stake included with slotted brass threaded insert for easy servicing. Luminaire may be mounted into threaded junction boxes or mounting accessories.

### WIRING:

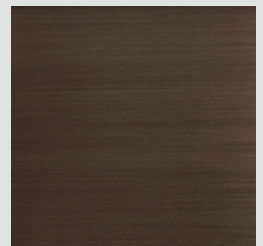
25ft 18/2AWG, SPT-2, UL Listed, copper wire that is protected by Polyvinyl Chloride (PVC).

LIFETIME



WARRANTY

FINISH



Weathered brass

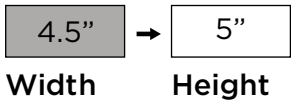
Nightscaping®  
SINCE 1959



# Jamaica

## Brass Drop-In

The Jamaica Sidera Series brass LED PAR36, drop-in, directional bullet light by Nightscaping is ideal for illuminating tall trees, grazing buildings, or backlighting distant trees and shrubs. Use this luminaire anywhere a highly controlled, stake mounted up-light is needed. The Jamaica above ground PAR36 luminaire is constructed of solid cast brass and is fully adjustable which allows for precise aiming.



## Specifications

### HOUSING:

Cast brass. Lock-and-load shroud with O-rings.

### SOCKET/LAMP HOLDER:

Stainless steel fork terminals.

### LENS:

Clear flat tempered glass lens.

### LAMP TYPE:

12V PAR36. LED recommended. 35W halogen or 12W LED maximum.

### MOUNTING:

1/2" NPT threaded stem. Heavy-duty composite stake included with slotted brass threaded insert for easy servicing. Luminaire may be mounted into threaded junction boxes or mounting accessories.

### WIRING:

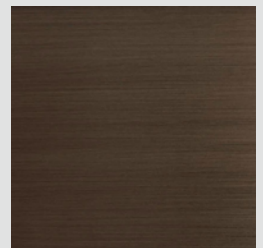
25ft 18/2AWG, SPT-2, UL Listed, copper wire that is protected by Polyvinyl Chloride (PVC).

LIFETIME



WARRANTY

FINISH



Weathered brass

Nightscaping®  
SINCE 1959

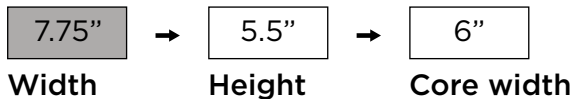
# In-Grade



# Bruteliter III

Brass Drop-In

The Bruteliter III Sidera Series PAR36, LED, drop-in luminaire is the most powerful and durable Nightscaping® fixture yet. The luminaire is ideal for illuminating tall trees up to 80', large buildings, and commercial applications. The Bruteliter is specifically designed for installation in hardscapes as well as lawns and planter areas. The Nightscaping® Bruteliter is the ultimate in power, function, durability and dependability. Drive over capacity: 7,000 lbs.



## Specifications

### HOUSING:

Cast brass and fiberglass composite.

### SOCKET/LAMP HOLDER:

Stainless steel gimble ring (36° tilt). Stainless steel fork terminals.

### LENS:

Clear flat tempered glass lens.

### LAMP TYPE:

12V PAR36. LED recommended. 35W halogen or 12W LED maximum.

### MOUNTING:

Direct burial, flush mount.

### WIRING:

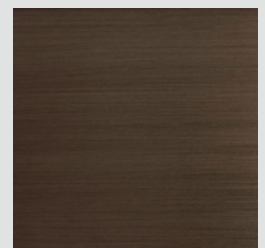
25ft 18AWG, SJT, UL Listed, copper wire that is protected by Polyvinyl Chloride (PVC).

LIFETIME



WARRANTY

FINISH



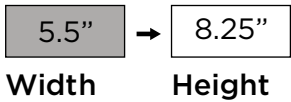
Weathered brass

Nightscaping®  
SINCE 1959

# Yellowstone

ABS Composite Drop-In

The Yellowstone Sidera Series PAR36, LED, drop-in well light by Nightscaping® is ideal for illuminating home facades, grazing buildings, or up-lighting large decorative trees. The Yellowstone in-ground well light has a slanted edge design which helps to prevent light glare and is protected by a cast brass cover with a clear glass lens. The Yellowstone is specifically designed for direct burial installation in the landscape.



## Specifications

### HOUSING:

Cast brass and ABS composite.

### SOCKET/LAMP HOLDER:

Stainless steel gimble ring (36° tilt). Stainless steel fork terminals.

### LENS:

Slanted Cast brass, clear flat tempered glass lens.

### LAMP TYPE:

12V PAR36. LED recommended. 35W halogen or 12W LED maximum.

### MOUNTING:

Direct burial, flush mount.

### WIRING:

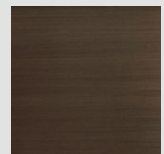
25ft 18AWG, SPT-2, UL Listed, copper wire that is protected by Polyvinyl Chloride (PVC).

LIFETIME

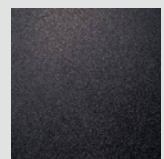


WARRANTY

FINISH



Weathered brass



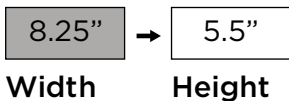
Black ABS composite

*Nightscaping*®  
SINCE 1959

# El Tatio

## Brass Drop-In

The El Tatio Sidera Series PAR36, LED, drop-in well light by Nightscaping® is ideal for illuminating home facades, grazing buildings, or up-lighting large decorative trees. The El Tatio in-ground well light has a flat brass cover which helps the luminaire to sit flush with the ground when installed. The El Tatio is specifically designed for direct burial, flush mount installation in the landscape.



## Specifications

### HOUSING:

Cast brass and ABS composite.

### SOCKET/LAMP HOLDER:

Stainless steel gimble ring. Stainless steel fork terminals.

### LENS:

Flat cast brass, clear flat tempered glass lens.

### LAMP TYPE:

12V PAR36. LED recommended. 35W halogen or 12W LED maximum.

### MOUNTING:

Direct burial, flush mount.

### WIRING:

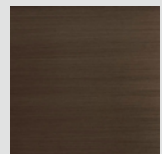
25ft 18AWG, SPT-2, UL Listed, copper wire that is protected by Polyvinyl Chloride (PVC).

LIFETIME

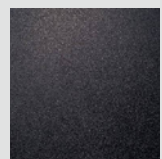


WARRANTY

### FINISH



Weathered brass



Black ABS composite

*Nightscaping*®  
SINCE 1959

# Glenwood

## Brass Drop-In

The vood Sidera Series PAR36, LED, drop-in well light by Nightscaping® is ideal for illuminating home facades, grazing buildings, or up-lighting large decorative trees. The Glenwood in-ground well light has a convex grated brass cover which helps to protect the luminaire in high traffic areas. The Glenwood is specifically designed for direct burial, flush mount installation in the landscape.



5.5" → 8.25"  
Width      Height



## Specifications

### HOUSING:

Cast brass and ABS composite.

### SOCKET/LAMP HOLDER:

Stainless steel gimble ring. Stainless steel fork terminals.

### LENS:

Louvered cast brass, clear tempered glass lens.

### LAMP TYPE:

12V PAR36. LED recommended. 35W halogen or 12W LED maximum.

### MOUNTING:

Direct burial, flush mount.

### WIRING:

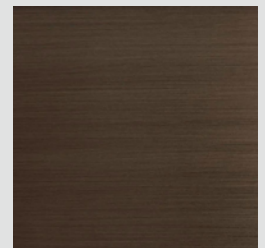
25ft 18AWG, SPT-2, UL Listed, copper wire that is protected by Polyvinyl Chloride (PVC).

LIFETIME



WARRANTY

FINISH



Weathered brass

*Nightscaping*®  
SINCE 1959

# Olympic

## Brass Drop-In

The Olympic Sidera Series MR-16, LED, drop-in well light by Nightscaping® is ideal for illuminating home facades or up-lighting statues/yard art. The Olympic in-ground well light has a flat brass cover and adjustable gimbal mechanism which allows for precise aiming when installing in concrete or hard surfaces where the luminaire needs to sit flush. The Olympic is specifically designed for direct burial, flush mount installation in the landscape.



4.75" → 5.5"  
Width      Height



## Specifications

### HOUSING:

Cast brass faceplate. (Opens with 3 mm hex key.) ABS composite body. Aluminum gimbal.

### SOCKET/LAMP HOLDER:

Ceramic GU5.3 bi-pin socket with stainless steel retaining springs, adjustable gimbal, accepts MR16 lamps with G4 or GY6.35 bases.

### LENS:

Flat cast brass, clear flat tempered glass lens.

### LAMP TYPE:

12V MR-16. LED recommended. 30W halogen or 7W LED maximum.

### MOUNTING:

Direct burial, flush mount.

### WIRING:

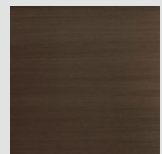
25ft 18AWG, SPT-2, UL Listed, copper wire that is protected by Polyvinyl Chloride (PVC).

LIFETIME

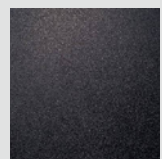


WARRANTY

### FINISH



Weathered brass



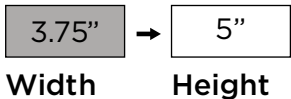
Black ABS composite

*Nightscaping*®  
SINCE 1959

# Pica

## Brass Drop-In

The Pica Sidera Series MR-16, LED, drop-in well light by Nightscaping® is ideal for illuminating home facades or up-lighting statues/yard art. The Pica in-ground well light has a slotted brass rock guard cover and adjustable gimbal mechanism which allows for precise aiming when installing in concrete or hard surfaces where the luminaire needs to sit flush. The slotted rock guard brass cover not only helps to protect the glass lens but also helps to prevent light glare. The Pica is specifically designed for direct burial, flush mount installation in the landscape.



## Specifications

### HOUSING:

Cast brass faceplate with rock guard. (Opens with 3 mm hex key.) ABS composite body. Aluminum gimbal.

### SOCKET/LAMP HOLDER:

Ceramic GU5.3 bi-pin socket with stainless steel retaining springs, adjustable gimbal, accepts MR16 lamps with G4 or GY6.35 bases.

### LENS:

Flat cast brass, clear flat tempered glass lens.

### LAMP TYPE:

12V MR-16. LED recommended. 30W halogen or 7W LED maximum.

### MOUNTING:

Direct burial, flush mount.

### WIRING:

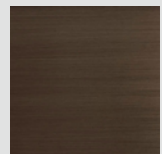
25ft 18AWG, SPT-2, UL Listed, copper wire that is protected by Polyvinyl Chloride (PVC).

LIFETIME

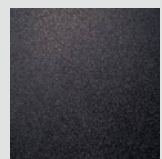


WARRANTY

### FINISH



Weathered brass



Black ABS composite

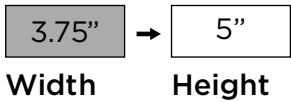
*Nightscaping*®  
SINCE 1959



# Saratoga

## Brass Drop-In

The Saratoga Sidera Series MR-16, LED, drop-in well light by Nightscaping® is ideal for illuminating home facades, statues or small decorative trees. The Saratoga in-ground well light has a shrouded brass cover and adjustable gimbal mechanism which allows for precise aiming when installing in concrete or hard surfaces where light glare could be an issue. The shrouded brass cover is the perfect solution for preventing light glare. The Saratoga is specifically designed for direct burial, flush mount installation in the landscape.



## Specifications

### HOUSING:

Cast brass faceplate with shroud. (Opens with 3 mm hex key.) ABS composite body. Aluminum gimbal.

### SOCKET/LAMP HOLDER:

Ceramic GU5.3 bi-pin socket with stainless steel retaining springs, adjustable gimbal, accepts MR16 lamps with G4 or GY6.35 bases.

### LENS:

Flat cast brass, clear flat tempered glass lens.

### LAMP TYPE:

12V MR-16. LED recommended. 30W halogen or 7W LED maximum.

### MOUNTING:

Direct burial, flush mount.

### WIRING:

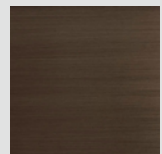
25ft 18AWG, SPT-2, UL Listed, copper wire that is protected by Polyvinyl Chloride (PVC).

LIFETIME

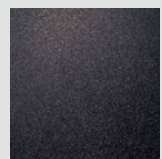


WARRANTY

### FINISH



Weathered brass



Black ABS composite

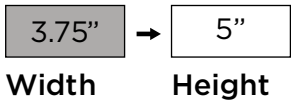
*Nightscaping*®  
SINCE 1959



# Toscana

Marker Light/Brass Drop-In

The Toscana Sidera Series MR-8, LED, drop-in micro well light by Nightscaping® is a great luminaire to use as marking lights for decks, docks, walkways or up-lighting small decorative features. The Toscana in-ground micro well light has a flat brass cover with optional clear or frosted glass lens. The Toscana is specifically designed for direct burial or flush mount installation in the landscape or hardscape.



## Specifications

### HOUSING:

Cast brass. Flat brass lens cover.

### SOCKET/LAMP HOLDER:

Spring loaded ceramic bi-pin socket.

### LENS:

Flat cast brass, optional clear or frosted flat tempered glass lens.

### LAMP TYPE:

12V MR-8 or single diode G4 bi-pin. LED recommended. 10W halogen or 3W LED maximum.

### MOUNTING:

Direct burial, flush mount.

### WIRING:

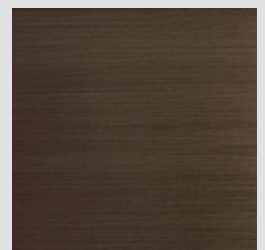
25ft 18AWG, SPT-2, UL Listed, copper wire that is protected by Polyvinyl Chloride (PVC).

LIFETIME



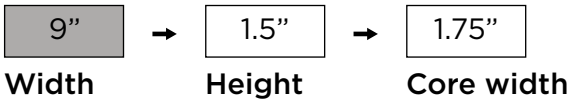
WARRANTY

FINISH



Weathered brass

*Nightscaping*®  
SINCE 1959



# Beehive

Marker Light/Brass Drop-In

The Beehive Sidera Series MR-8, LED, drop-in micro well light by Nightscaping® is ideal for up-lighting facades or small decorative trees. The Beehive in-ground micro well light has a shielded brass cover with optional clear or frosted glass lens. The Beehive is specifically designed for direct burial or flush mount installation in the landscape or hardscape.



## Specifications

### HOUSING:

Cast brass. Shielded brass lens cover.

### SOCKET/LAMP HOLDER:

Spring loaded ceramic bi-pin socket.

### LENS:

Flat cast brass, optional clear or frosted flat tempered glass lens.

### LAMP TYPE:

12V MR-8 or single diode G4 bi-pin. LED recommended. 10W halogen or 3W LED maximum.

### MOUNTING:

Direct burial, flush mount.

### WIRING:

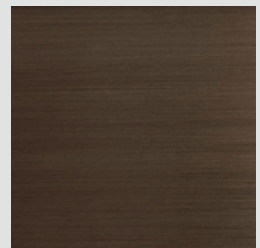
25ft 18AWG, SPT-2, UL Listed, copper wire that is protected by Polyvinyl Chloride (PVC).

LIFETIME



WARRANTY

FINISH



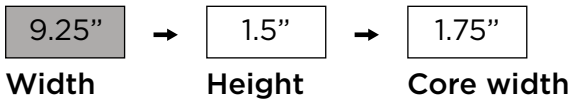
Weathered brass

Nightscaping®  
SINCE 1959

# Riverside

Marker Light/Brass Drop-In

The Riverside Sidera Series MR-8, LED, drop-in micro well light by Nightscaping® is ideal for illuminating deck, dock or walking pathways. The Riverside in-ground micro well light has a hooded brass cover which helps to direct the light output in one direction. The Riverside is specifically designed for direct burial or flush mount installation in the landscape or hardscape.



## Specifications

### HOUSING:

Cast brass. Hooded brass lens cover.

### SOCKET/LAMP HOLDER:

Spring loaded ceramic bi-pin socket.

### LENS:

Flat cast brass, frosted flat tempered glass lens.

### LAMP TYPE:

12V MR-8 or single diode G4 bi-pin. LED recommended. 10W halogen or 3W LED maximum.

### MOUNTING:

Direct burial, flush mount.

### WIRING:

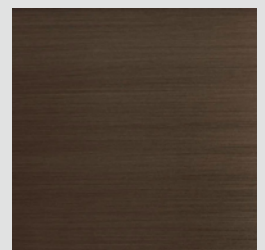
25ft 18AWG, SPT-2, UL Listed, copper wire that is protected by Polyvinyl Chloride (PVC).

LIFETIME



WARRANTY

FINISH



Weathered brass

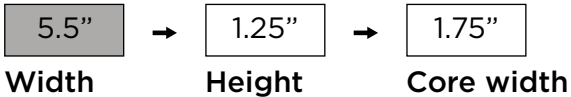
Nightscaping®  
SINCE 1959



# Strokkur

Marker Light/Brass Drop-In

The Strokkur Sidera Series MR-8, LED, drop-in micro well light by Nightscaping® is ideal for illuminating deck, dock or walking pathways. The Strokkur in-ground micro well light has a brass louvered cover which helps to protect the light fixture in high traffic areas. The Strokkur is specifically designed for direct burial or flush mount installation in the landscape or hardscape.



## Specifications

### HOUSING:

Cast brass. Louvered brass lens cover.

### SOCKET/LAMP HOLDER:

Spring loaded ceramic bi-pin socket.

### LENS:

Flat cast brass, frosted flat tempered glass lens.

### LAMP TYPE:

12V MR-8 or single diode G4 bi-pin. LED recommended. 10W halogen or 3W LED maximum.

### MOUNTING:

Direct burial, flush mount.

### WIRING:

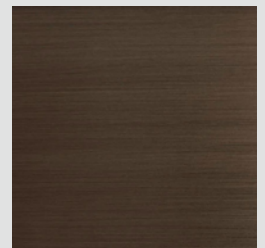
25ft 18AWG, SPT-2, UL Listed, copper wire that is protected by Polyvinyl Chloride (PVC).

LIFETIME



WARRANTY

FINISH



Weathered brass

Nightscaping®  
SINCE 1959

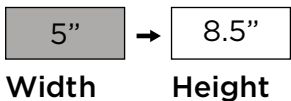
# Wash Lights



# Aruba

## Brass Drop-In

The Aruba Sidera Series G4 bi-pin, LED, drop-in luminaire by Nightscaping® is a discrete yet powerful wash light. The luminaire is ideal for softly illuminating decorative walls and planter beds. The Aruba is specifically designed for installation in hardscapes as well as planter areas. The Aruba wash light is constructed of solid cast brass and is fully adjustable which allows precise aiming and positioning to create the perfect lighting for any project.



## Specifications

### HOUSING:

Cast brass with angled shroud.

### SOCKET/LAMP HOLDER:

Fixed ceramic bi-pin socket accepts bi-pin lamps with G4 or GY6.35 base.

### LENS:

Frosted flat tempered glass lens.

### LAMP TYPE:

12V bi-pin. LED recommended. 35W halogen or 6W LED maximum.

### MOUNTING:

1/2" NPT threaded stem. Heavy-duty composite stake included with slotted brass threaded insert for easy servicing. Luminaire may be mounted into threaded junction boxes or mounting accessories.

### WIRING:

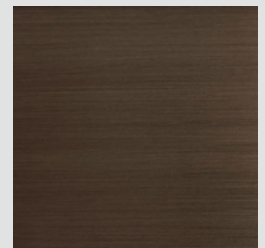
25ft 18AWG, SPT-2, UL Listed, copper wire that is protected by Polyvinyl Chloride (PVC). Chloride (PVC).

LIFETIME



WARRANTY

FINISH



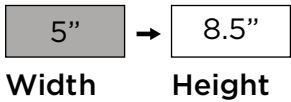
Weathered brass

Nightscaping®  
SINCE 1959

# Antigua

Brass Drop-In

The Antigua Sidera Series G4 bi-pin, LED, drop-in luminaire is Nightscaping's® largest wall wash light in their line card. The luminaire is ideal for illuminating home facades and retaining walls. The Antigua is specifically designed for installation in hardscapes as well as planter areas. The Antigua wash light is constructed of solid cast brass and is fully adjustable which allows precise aiming and positioning to create the perfect lighting for any project.



## Specifications

### HOUSING:

Cast brass with angled shroud.

### SOCKET/LAMP HOLDER:

Fixed ceramic bi-pin socket accepts bi-pin lamps with G4 or GY6.35 base

### LENS:

Clear, Linear, and Frosted flat tempered glass lenses included.

### LAMP TYPE:

12V bi-pin. LED recommended. 35W halogen or 7W LED maximum.

### MOUNTING:

1/2" NPT threaded stem. Heavy-duty composite stake included with slotted brass threaded insert for easy servicing. Luminaire may be mounted into threaded junction boxes or mounting accessories.

### WIRING:

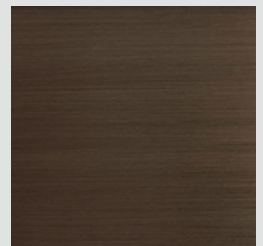
25ft 18AWG, SPT-2, UL Listed, copper wire that is protected by Polyvinyl Chloride (PVC).

LIFETIME



WARRANTY

FINISH



Weathered brass

Nightscaping®  
SINCE 1959



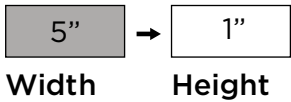
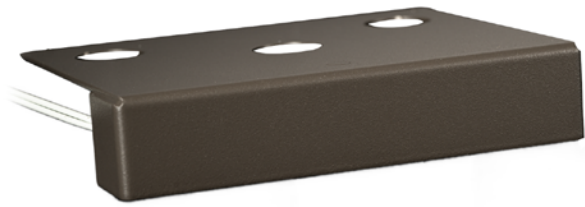
# Hardscape Lights



# Washington

## Aluminum Drop-In

The Washington Sidera Series G4 bi-pin, LED, drop-in luminaire by Nightscaping® is a discrete wall cap light. The luminaire is ideal for softly illuminating decorative walls and raised stone planter beds. It is specifically designed for installation on hardscape walls. The Washington wall cap light is constructed of 6061 aluminum that is powder coated black to blend into any landscape.



## Specifications

### HOUSING:

6061 Aluminum.

### SOCKET/LAMP HOLDER:

Fixed ceramic G4 bi-pin socket.

### LENS:

N/a.

### LAMP TYPE:

12V bi-pin. LED recommended. 20W halogen or 3W LED maximum.

### MOUNTING:

Mounting plate facilitate mounting under a hardscape cap or flush to a wall.

### WIRING:

25ft 18AWG, SPT-2, UL Listed, copper wire that is protected by Polyvinyl Chloride (PVC).

5 YEAR



WARRANTY

FINISH



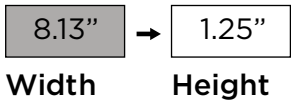
Black Powder Coat

*Nightscaping*®  
SINCE 1959

# Windsor

## Brass Drop-In

The Windsor Sidera Series G4 bi-pin, LED, drop-in luminaire by Nightscaping® is ideal for illuminating decorative walls and raised stone planter beds. The Windsor wall cap light is specifically designed for installation on hardscape walls. The luminaire is constructed of solid cast brass and is built to withstand the test of time.



## Specifications

**HOUSING:**  
Cast brass.

**SOCKET/LAMP HOLDER:**  
Fixed ceramic G4 bi-pin socket.

**LENS:**  
Frosted flat tempered glass lens.

**LAMP TYPE:**  
12V bi-pin. LED recommended. 20W halogen or 4W LED maximum.

**MOUNTING:**  
Brass mounting plate facilitate mounting under a hardscape cap or flush to a wall.

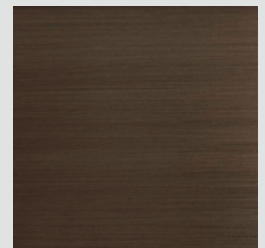
**WIRING:**  
25ft 18AWG, SPT-2, UL Listed, copper wire that is protected by Polyvinyl Chloride (PVC).

LIFETIME



WARRANTY

FINISH



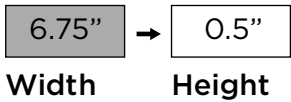
Weathered brass

*Nightscaping*®  
SINCE 1959

# Marion

Brass Integrated

The Marion Sidera Series integrated, LED, luminaire by Nightscaping® is ideal for illuminating decorative walls and raised stone planter beds. The Marion's sleek design helps for it to disappear into any hardscape wall where it is installed. The luminaire is constructed of solid cast brass and is built to withstand the test of time.



## Specifications

### HOUSING:

Cast brass. Stainless steel surface mount.

### SOCKET/LAMP HOLDER:

Fixed ceramic G4 bi-pin socket.

### LENS:

Frosted flat tempered glass lens.

### LAMP TYPE:

12V 1.5W integrated LED.

### MOUNTING:

Brass mounting plate facilitate mounting under a hardscape cap or flush to a wall.

### WIRING:

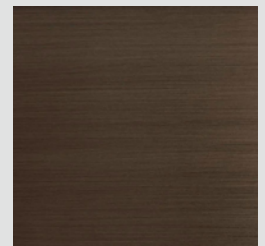
25ft 18AWG, SPT-2, UL Listed, copper wire that is protected by Polyvinyl Chloride (PVC).

LIFETIME



WARRANTY

FINISH



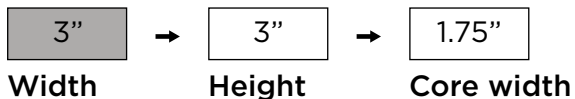
Weathered brass

*Nightscaping*®  
SINCE 1959

# Wexford 50

Brass Integrated

The Wexford 50 Sidera Series integrated, LED, luminaire by Nightscaping® is ideal for illuminating decorative walls and raised stone planter beds. The Wexford 50's sleek design helps for it to disappear into any hardscape wall where it is installed. The luminaire is constructed of solid cast brass and is built to withstand the test of time.



## Specifications

### HOUSING:

Cast brass. Stainless steel surface mount.

### SOCKET/LAMP HOLDER:

Fixed ceramic G4 bi-pin socket.

### LENS:

Frosted flat tempered glass lens.

### LAMP TYPE:

12V 1.5W integrated LED.

### MOUNTING:

Brass mounting plate facilitate mounting under a hardscape cap or flush to a wall.

### WIRING:

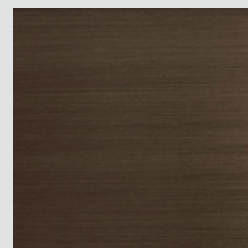
25ft 18AWG, SPT-2, UL Listed, copper wire that is protected by Polyvinyl Chloride (PVC).

LIFETIME



WARRANTY

FINISH



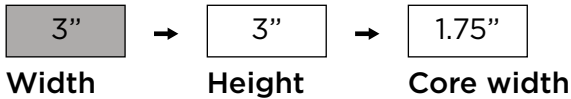
Weathered brass

Nightscaping®  
SINCE 1959

# Wexford 100

Brass Integrated

The Wexford 100 Sidera Series integrated, LED, luminaire by Nightscaping® is ideal for illuminating decorative walls and raised stone planter beds. The Wexford 100's sleek design helps for it to disappear into any hardscape wall where it is installed. The luminaire is constructed of solid cast brass and is built to withstand the test of time.



## Specifications

### HOUSING:

Cast brass. Stainless steel surface mount.

### SOCKET/LAMP HOLDER:

Fixed ceramic G4 bi-pin socket.

### LENS:

Frosted flat tempered glass lens.

### LAMP TYPE:

12V 1.5W integrated LED.

### MOUNTING:

Brass mounting plate facilitate mounting under a hardscape cap or flush to a wall.

### WIRING:

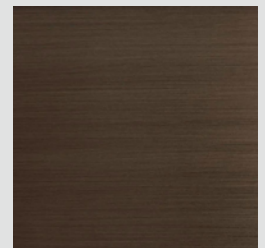
25ft 18AWG, SPT-2, UL Listed, copper wire that is protected by Polyvinyl Chloride (PVC).

LIFETIME



WARRANTY

FINISH



Weathered brass

Nightscaping®  
SINCE 1959

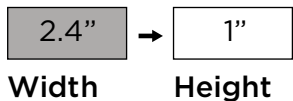
# Rail, Deck & Dock Lights



# Richmond

## Aluminum Drop-In

The Richmond Sidera Series G4 bi-pin, LED, drop-in luminaire by Nightscaping® is a discrete handrail light. The luminaire is ideal for softly illuminating pathways and walkways with handrails from above. It is specifically designed for installation on handrails. The Richmond handrail light is constructed of 6061 aluminum that is powder coated bronze.



## Specifications

### HOUSING:

6061 Aluminum.

### SOCKET/LAMP HOLDER:

Fixed ceramic G4 bi-pin socket.

### LENS:

n/a

### LAMP TYPE:

12V bi-pin. LED recommended. 20W halogen or 3W LED maximum.

### MOUNTING:

Mounting plate facilitate mounting under a handrail.

### WIRING:

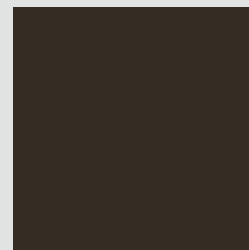
25ft 18AWG, SPT-2, UL Listed, copper wire that is protected by Polyvinyl Chloride (PVC).

5 YEAR



WARRANTY

FINISH



Bronze Powder Coat

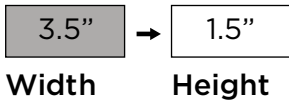
*Nightscaping*®  
SINCE 1959



# Columbia

## Brass Drop-In

The Columbia Sidera Series G4 bi-pin, LED, drop-in luminaire by Nightscaping® is ideal for illuminating decks, docks and patios. The Columbia cast brass deck light has a frosted glass lens to create a nice subtle light. It is specifically designed for installation on deck and dock handrails to softly illuminate the walking surface. The Columbia deck & dock light is constructed of cast brass.



## Specifications

**HOUSING:**  
Cast Brass.

**SOCKET/LAMP HOLDER:**  
Fixed ceramic G4 bi-pin socket.

**LENS:**  
Frosted flat glass lens.

**LAMP TYPE:**  
12V bi-pin. LED recommended. 20W halogen or 3W LED maximum.

**MOUNTING:**  
Brass mounting plate.

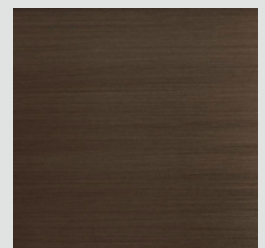
**WIRING:**  
25ft 18AWG, SPT-2, UL Listed, copper wire that is protected by Polyvinyl Chloride (PVC).

LIFETIME



WARRANTY

FINISH



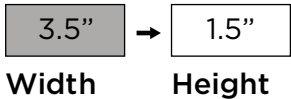
Weathered brass

*Nightscaping*®  
SINCE 1959

# Oxford

## Brass Drop-In

The Oxford Sidera Series G4 bi-pin, LED, drop-in luminaire by Nightscaping® is ideal for illuminating decks, docks and patios. The Oxford cast brass deck light has a frosted glass lens with louvered brass cover to create a nice subtle light. It is specifically designed for installation on deck and dock handrails to softly illuminate the walking surface. The Oxford deck & dock light is constructed of cast brass.



## Specifications

### HOUSING:

Cast Brass. Louvered brass lens cover.

### SOCKET/LAMP HOLDER:

Fixed ceramic G4 bi-pin socket.

### LENS:

Frosted flat glass lens.

### LAMP TYPE:

12V bi-pin. LED recommended. 20W halogen or 3W LED maximum.

### MOUNTING:

Brass mounting plate.

### WIRING:

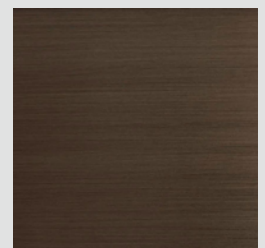
25ft 18AWG, SPT-2, UL Listed, copper wire that is protected by Polyvinyl Chloride (PVC).

LIFETIME



WARRANTY

FINISH



Weathered brass

*Nightscaping*®  
SINCE 1959

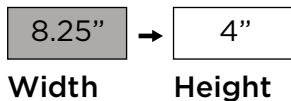
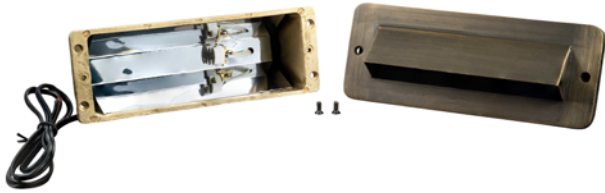
# Step Lights



# Strasbourg

Brass Drop-In

The Strasbourg Sidera Series G4 bi-pin, LED, drop-in luminaire by Nightscaping® is ideal for illuminating steps on decks, docks and patios. The Strasbourg luminaire is an 8.25" solid cast brass luminaire that is installed to sit flush into any hardscape or wood surface. The Strasbourg has a shrouded cover plate to help hide the light source and direct the light downward onto the walking surface.



## Specifications

### HOUSING:

Cast Brass. Shrouded brass lens cover.

### SOCKET/LAMP HOLDER:

Fixed ceramic G4 bi-pin socket.

### LENS:

Frosted flat glass lens.

### LAMP TYPE:

12V bi-pin. LED recommended. 20W halogen or 4W LED maximum.

### MOUNTING:

Brass housing for mounting into hardscape/wood surfaces.

### WIRING:

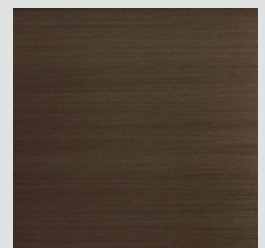
25ft 18AWG, SPT-2, UL Listed, copper wire that is protected by Polyvinyl Chloride (PVC).

LIFETIME



WARRANTY

FINISH



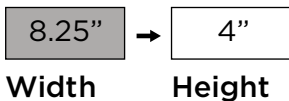
Weathered brass

*Nightscaping*®  
SINCE 1959

# Brandywine

## Brass Drop-In

The Brandywine Sidera Series G4 bi-pin, LED, drop-in luminaire by Nightscaping® is ideal for illuminating steps on decks, docks and patios. The Brandywine luminaire is an 8" solid cast brass luminaire that is installed to sit flush into any hardscape or wood surface. The Brandywine has a louvered brass cover plate to help protect the glass lens from high traffic areas like stairs and steps.



## Specifications

### HOUSING:

Cast Brass. Louvered brass lens cover.

### SOCKET/LAMP HOLDER:

Fixed ceramic G4 bi-pin socket.

### LENS:

Frosted flat glass lens.

### LAMP TYPE:

12V bi-pin. LED recommended. 20W halogen or 4W LED maximum.

### MOUNTING:

Brass housing for mounting into hardscape/wood surfaces.

### WIRING:

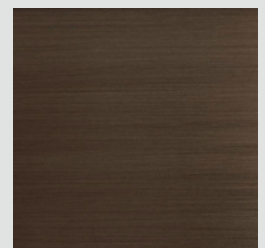
25ft 18AWG, SPT-2, UL Listed, copper wire that is protected by Polyvinyl Chloride (PVC).

LIFETIME



WARRANTY

FINISH



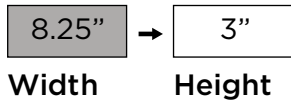
Weathered brass

Nightscaping®  
SINCE 1959

# Wyndmoor

Brass Drop-In

The Wyndmoor Sidera Series G4 bi-pin, LED, drop-in luminaire by Nightscaping® is ideal for illuminating steps on decks, docks and patios. The Wyndmoor luminaire is an 8.25" solid cast brass luminaire that is installed to sit flush into any hardscape or wood surface. The Wyndmoor has a frosted glass lens with brass trim cover plate to help maximize the amount of light emitting from the fixture.



## Specifications

**HOUSING:**  
Cast Brass.

**SOCKET/LAMP HOLDER:**  
Fixed ceramic G4 bi-pin socket.

**LENS:**  
Frosted flat glass lens.

**LAMP TYPE:**  
12V bi-pin. LED recommended. 20W halogen or 4W LED maximum.

**MOUNTING:**  
Brass housing for mounting into hardscape/wood surfaces.

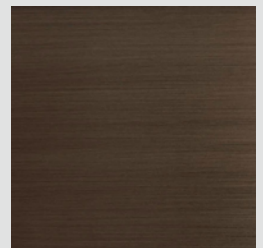
**WIRING:**  
25ft 18AWG, SPT-2, UL Listed, copper wire that is protected by Polyvinyl Chloride (PVC).

LIFETIME



WARRANTY

FINISH



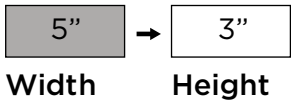
Weathered brass

*Nightscaping*<sup>®</sup>  
SINCE 1959

# Pennsburg

## Brass Drop-In

The Pennsburg Sidera Series G4 bi-pin, LED, drop-in luminaire by Nightscaping® is ideal for illuminating steps on decks, docks and patios. The Pennsburg luminaire is a 5" solid cast brass luminaire that is installed to sit flush into any hardscape or wood surface. The Pennsburg has a frosted glass lens with brass trim cover plate to help maximize the amount of light emitting from the fixture.



## Specifications

**HOUSING:**  
Cast Brass.

**SOCKET/LAMP HOLDER:**  
Fixed ceramic G4 bi-pin socket.

**LENS:**  
Frosted flat glass lens.

**LAMP TYPE:**  
12V bi-pin. LED recommended. 20W halogen or 4W LED maximum.

**MOUNTING:**  
Brass housing for mounting into hardscape/wood surfaces.

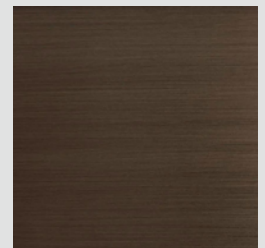
**WIRING:**  
25ft 18AWG, SPT-2, UL Listed, copper wire that is protected by Polyvinyl Chloride (PVC).

LIFETIME



WARRANTY

FINISH



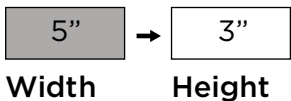
Weathered brass

*Nightscaping*®  
SINCE 1959

# Avondale

## Brass Drop-In

The Avondale Sidera Series G4 bi-pin, LED, drop-in luminaire by Nightscaping® is ideal for illuminating steps on decks, docks and patios. The Avondale luminaire is an 5" solid cast brass luminaire that is installed to sit flush into any hardscape or wood surface. The Avondale has a louvered brass cover plate to help protect the glass lens from high traffic areas like stairs and steps.



## Specifications

### HOUSING:

Cast Brass. Louvered brass lens cover.

### SOCKET/LAMP HOLDER:

Fixed ceramic G4 bi-pin socket.

### LENS:

Frosted flat glass lens.

### LAMP TYPE:

12V bi-pin. LED recommended. 20W halogen or 4W LED maximum.

### MOUNTING:

Brass housing for mounting into hardscape/wood surfaces.

### WIRING:

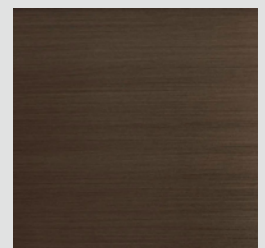
25ft 18AWG, SPT-2, UL Listed, copper wire that is protected by Polyvinyl Chloride (PVC).

LIFETIME



WARRANTY

### FINISH



Weathered brass

Nightscaping®  
SINCE 1959



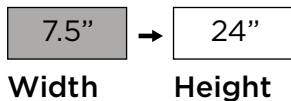
# Path & Area Lights



# Stockholm

## Brass Drop-In

The Stockholm Sidera Series G4 bi-pin, LED, drop-in luminaire by Nightscaping® is ideal for illuminating pathways and walking areas. The Stockholm luminaire is a solid cast brass path-light that has an enclosed socket. The 6" diameter hat with reflective white powder-coated interior helps the fixture to illuminate almost any garden or walking area.



## Specifications

**HOUSING:**  
Cast Brass.

**SOCKET/LAMP HOLDER:**  
Fixed ceramic G4 bi-pin socket.

**LENS:**  
Clear glass lens.

**LAMP TYPE:**  
12V bi-pin. LED recommended. 35W halogen or 6W LED maximum.

**MOUNTING:**  
1/2" NPT threaded stem. Heavy-duty composite stake included with slotted brass threaded insert for easy servicing.

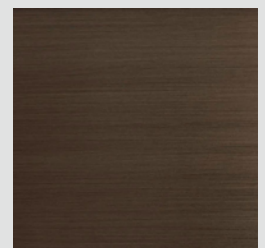
**WIRING:**  
25ft 18/2AWG, SPT-2, UL Listed, copper wire that is protected by Polyvinyl Chloride (PVC).

LIFETIME



WARRANTY

FINISH



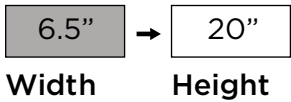
Weathered brass

*Nightscaping*®  
SINCE 1959

# Copenhagen

## Brass Drop-In

The Copenhagen Sidera Series G4 bi-pin, LED, drop-in luminaire by Nightscaping® is ideal for illuminating pathways and walking areas. The Copenhagen luminaire is a solid cast brass path-light that has an enclosed socket. The cast brass hat with reflective white powder-coated interior helps the fixture to illuminate almost any garden or walking area.



## Specifications

**HOUSING:**  
Cast Brass.

**SOCKET/LAMP HOLDER:**  
Fixed ceramic G4 bi-pin socket.

**LENS:**  
Clear glass lens.

**LAMP TYPE:**  
12V bi-pin. LED recommended. 35W halogen or 6W LED maximum.

**MOUNTING:**  
1/2" NPT threaded stem. Heavy-duty composite stake included with slotted brass threaded insert for easy servicing.

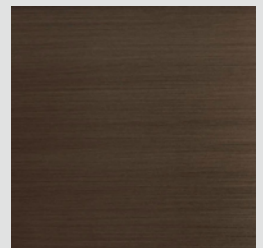
**WIRING:**  
25ft 18/2AWG, SPT-2, UL Listed, copper wire that is protected by Polyvinyl Chloride (PVC).

LIFETIME



WARRANTY

FINISH



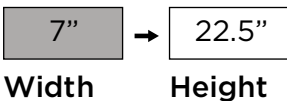
Weathered brass

*Nightscaping*®  
SINCE 1959

# Athens

## Brass Drop-In

The Athens Sidera Series G4 bi-pin, LED, drop-in luminaire by Nightscaping® is ideal for illuminating pathways and walking areas. The Athens luminaire is a solid cast brass path-light that has an enclosed socket. The 6" cast brass hat with reflective white powder-coated interior helps the fixture to illuminate almost any garden or walking area.



## Specifications

**HOUSING:**  
Cast Brass.

**SOCKET/LAMP HOLDER:**  
Fixed ceramic G4 bi-pin socket.

**LENS:**  
Clear glass lens.

**LAMP TYPE:**  
12V bi-pin. LED recommended. 35W halogen or 6W LED maximum.

**MOUNTING:**  
1/2" NPT threaded stem. Heavy-duty composite stake included with slotted brass threaded insert for easy servicing.

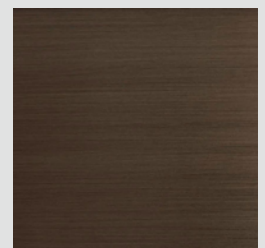
**WIRING:**  
25ft 18/2AWG, SPT-2, UL Listed, copper wire that is protected by Polyvinyl Chloride (PVC).

LIFETIME



WARRANTY

FINISH



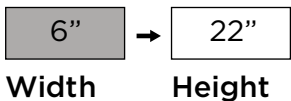
Weathered brass

*Nightscaping*®  
SINCE 1959

# Brussels

## Brass Drop-In

The Brussels Sidera Series G4 bi-pin, LED, drop-in luminaire by Nightscaping® is ideal for illuminating pathways and walking areas. The Brussels luminaire is a solid cast brass path-light that has an enclosed socket. The 6" cast brass hat with reflective white powder-coated interior helps the fixture to illuminate almost any garden or walking area.



## Specifications

**HOUSING:**  
Cast Brass.

**SOCKET/LAMP HOLDER:**  
Fixed ceramic G4 bi-pin socket.

**LENS:**  
Clear glass lens.

**LAMP TYPE:**  
12V bi-pin. LED recommended. 35W halogen or 6W LED maximum.

**MOUNTING:**  
1/2" NPT threaded stem. Heavy-duty composite stake included with slotted brass threaded insert for easy servicing.

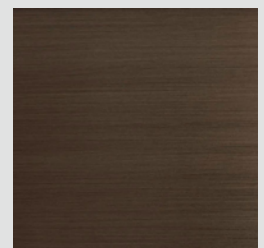
**WIRING:**  
25ft 18/2AWG, SPT-2, UL Listed, copper wire that is protected by Polyvinyl Chloride (PVC).

LIFETIME



WARRANTY

FINISH



Weathered brass

*Nightscaping*<sup>®</sup>  
SINCE 1959

# Oslo

## Brass Drop-In

The Oslo Sidera Series G4 bi-pin, LED, drop-in luminaire by Nightscaping® is ideal for illuminating pathways and walking areas. The Oslo luminaire is a solid cast brass path-light that has an enclosed socket. The cast brass hat with reflective white powder-coated interior helps the fixture to illuminate almost any garden or walking area.



6"



22"

Width

Height

## Specifications

### HOUSING:

Cast Brass.

### SOCKET/LAMP HOLDER:

Fixed ceramic G4 bi-pin socket.

### LENS:

Frosted glass lens.

### LAMP TYPE:

12V bi-pin. LED recommended. 35W halogen or 6W LED maximum.

### MOUNTING:

1/2" NPT threaded stem. Heavy-duty composite stake included with slotted brass threaded insert for easy servicing.

### WIRING:

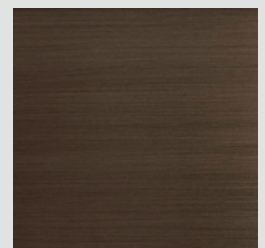
25ft 18/2AWG, SPT-2, UL Listed, copper wire that is protected by Polyvinyl Chloride (PVC).

LIFETIME



WARRANTY

FINISH



Weathered brass

*Nightscaping*<sup>®</sup>  
SINCE 1959

# Sofia

## Brass Drop-In

The Sofia Sidera Series G4 bi-pin, LED, drop-in luminaire by Nightscaping® is ideal for illuminating pathways and walking areas. The Sofia luminaire is a tulip shaped cast brass path-light that has an enclosed socket. The brass hat with reflective white powder-coated interior helps the fixture to illuminate almost any garden or walking area.



4"



24.5"

Width

Height

## Specifications

### HOUSING:

Cast Brass.

### SOCKET/LAMP HOLDER:

Fixed ceramic G4 bi-pin socket.

### LENS:

Frosted glass lens.

### LAMP TYPE:

12V bi-pin. LED recommended. 35W halogen or 6W LED maximum.

### MOUNTING:

1/2" NPT threaded stem. Heavy-duty composite stake included with slotted brass threaded insert for easy servicing.

### WIRING:

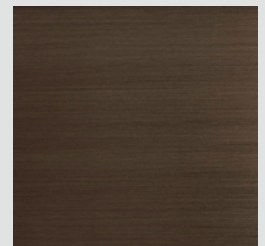
25ft 18/2AWG, SPT-2, UL Listed, copper wire that is protected by Polyvinyl Chloride (PVC).

LIFETIME



WARRANTY

FINISH



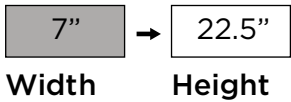
Weathered brass

*Nightscaping*<sup>®</sup>  
SINCE 1959

# Venice

## Brass Drop-In

The Venice Sidera Series G4 bi-pin, LED, drop-in luminaire by Nightscaping® is ideal for illuminating pathways and walking areas. The Venice luminaire is a cast brass path-light that has an enclosed socket. The 6" brass hat with reflective white powder-coated interior helps the fixture to illuminate almost any garden or walking area.



## Specifications

**HOUSING:**  
Cast Brass.

**SOCKET/LAMP HOLDER:**  
Fixed ceramic G4 bi-pin socket.

**LENS:**  
Frosted glass lens.

**LAMP TYPE:**  
12V bi-pin. LED recommended. 35W halogen or 6W LED maximum.

**MOUNTING:**  
1/2" NPT threaded stem. Heavy-duty composite stake included with slotted brass threaded insert for easy servicing.

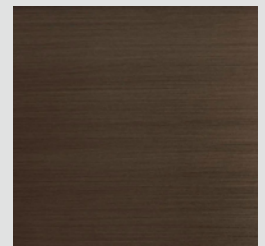
**WIRING:**  
25ft 18/2AWG, SPT-2, UL Listed, copper wire that is protected by Polyvinyl Chloride (PVC).

LIFETIME



WARRANTY

FINISH



Weathered brass

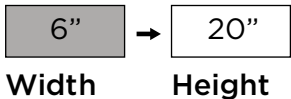
*Nightscaping*®  
SINCE 1959



# Warsaw

## Brass Drop-In

The Warsaw Sidera Series G4 bi-pin, LED, drop-in luminaire by Nightscaping® is ideal for illuminating pathways and walking areas. The Warsaw luminaire is unique in that it has an adjustable 6" cast brass hat that allows you to adjust the pathlight. The 6" cast brass hat with reflective white powder-coated interior helps the fixture to illuminate almost any garden or walking area.



Width

Height

## Specifications

### HOUSING:

Cast Brass.

### SOCKET/LAMP HOLDER:

Fixed ceramic G4 bi-pin socket.

### LENS:

Frosted glass lens.

### LAMP TYPE:

12V bi-pin. LED recommended. 35W halogen or 6W LED maximum.

### MOUNTING:

1/2" NPT threaded stem. Heavy-duty composite stake included with slotted brass threaded insert for easy servicing.

### WIRING:

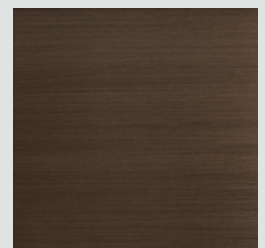
25ft 18/2AWG, SPT-2, UL Listed, copper wire that is protected by Polyvinyl Chloride (PVC).

LIFETIME



WARRANTY

FINISH



Weathered brass

*Nightscaping*®  
SINCE 1959

# Amsterdam

## Brass Drop-In

The Amsterdam Sidera Series G4 bi-pin, LED, drop-in luminaire by Nightscaping® is ideal for illuminating pathways and walking areas. The Amsterdam luminaire is a cast brass path-light that has an enclosed socket. The cast brass hat with reflective white powder-coated interior helps the fixture to illuminate almost any garden or walking area.



7.75"



24.75"

Width

Height

## Specifications

### HOUSING:

Cast Brass.

### SOCKET/LAMP HOLDER:

Fixed ceramic G4 bi-pin socket.

### LENS:

Clear glass lens.

### LAMP TYPE:

12V bi-pin. LED recommended. 35W halogen or 6W LED maximum.

### MOUNTING:

1/2" NPT threaded stem. Heavy-duty composite stake included with slotted brass threaded insert for easy servicing.

### WIRING:

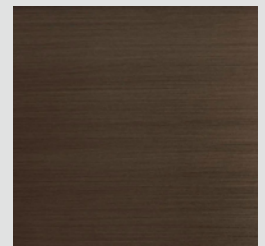
25ft 18/2AWG, SPT-2, UL Listed, copper wire that is protected by Polyvinyl Chloride (PVC).

LIFETIME



WARRANTY

FINISH



Weathered brass

*Nightscaping*®  
SINCE 1959

# Berlin

## Brass Drop-In

The Berlin Sidera Series G4 bi-pin, LED, drop-in luminaire by Nightscaping® is ideal for illuminating pathways and walking areas. The Berlin luminaire is a cast brass path-light that has an enclosed socket. The cast brass hat with reflective white powder-coated interior helps the fixture to illuminate almost any garden or walking area.



6.5"



24.75"

Width

Height

## Specifications

### HOUSING:

Cast Brass.

### SOCKET/LAMP HOLDER:

Fixed ceramic G4 bi-pin socket.

### LENS:

Clear glass lens.

### LAMP TYPE:

12V bi-pin. LED recommended. 35W halogen or 6W LED maximum.

### MOUNTING:

1/2" NPT threaded stem. Heavy-duty composite stake included with slotted brass threaded insert for easy servicing.

### WIRING:

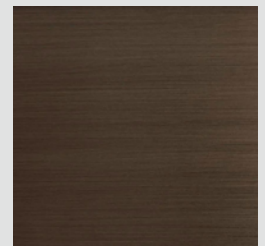
25ft 18/2AWG, SPT-2, UL Listed, copper wire that is protected by Polyvinyl Chloride (PVC).

LIFETIME



WARRANTY

FINISH



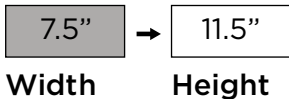
Weathered brass

*Nightscaping*®  
SINCE 1959

# Paris

## Brass Drop-In

The Paris Sidera Series G4 bi-pin, LED, drop-in luminaire by Nightscaping® is ideal for illuminating docks, pathways and walking areas. The Paris luminaire is a cast brass path-light that has an enclosed socket. The cast brass hat with reflective white powder-coated interior helps the fixture to illuminate almost any outdoor living space.



## Specifications

**HOUSING:**  
Cast Brass.

**SOCKET/LAMP HOLDER:**  
Fixed ceramic G4 bi-pin socket.

**LENS:**  
Clear glass lens.

**LAMP TYPE:**  
12V bi-pin. LED recommended. 35W halogen or 6W LED maximum.

**MOUNTING:**  
1/2" NPT threaded stem. Heavy-duty composite stake included with slotted brass threaded insert for easy servicing.

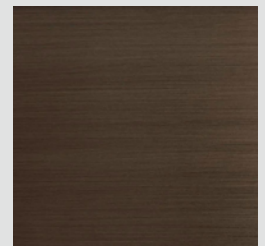
**WIRING:**  
25ft 18/2AWG, SPT-2, UL Listed, copper wire that is protected by Polyvinyl Chloride (PVC).

LIFETIME



WARRANTY

FINISH



Weathered brass

*Nightscaping*®  
SINCE 1959

# Monaco

## Brass Drop-In

The Monaco Sidera Series G4 bi-pin, LED, drop-in luminaire by Nightscaping® is ideal for illuminating pathways and walking areas. The Monaco luminaire is a cast brass path-light that has an enclosed socket. The cast brass hat with reflective white powder-coated interior helps the fixture to illuminate almost any outdoor living space.



8.5"



24.75"

Width

Height

## Specifications

### HOUSING:

Cast Brass.

### SOCKET/LAMP HOLDER:

Fixed ceramic G4 bi-pin socket.

### LENS:

Clear glass lens.

### LAMP TYPE:

12V bi-pin. LED recommended. 35W halogen or 6W LED maximum.

### MOUNTING:

1/2" NPT threaded stem. Heavy-duty composite stake included with slotted brass threaded insert for easy servicing.

### WIRING:

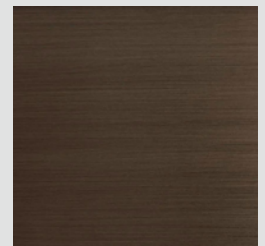
25ft 18/2AWG, SPT-2, UL Listed, copper wire that is protected by Polyvinyl Chloride (PVC).

LIFETIME



WARRANTY

FINISH



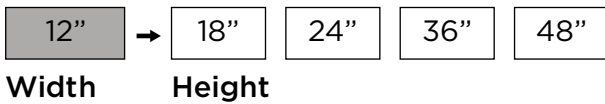
Weathered brass

*Nightscaping*®  
SINCE 1959

# Drammen

## Brass Drop-In

The Drammen Sidera Series G4 bi-pin, LED, drop-in luminaire by Nightscaping® is ideal for illuminating pathways and garden areas. The Drammen luminaire is a solid cast brass path-light that comes in a variety of heights. The oversized cast brass hat with reflective white powder-coated interior helps the fixture to illuminate almost any garden or walking area.



## Specifications

**HOUSING:**  
Cast brass.

**SOCKET/LAMP HOLDER:**  
Fixed ceramic G4 bi-pin socket.

**LENS:**  
Clear glass lens.

**LAMP TYPE:**  
G4 BIPIN LED.

**MOUNTING:**  
ABS 8" stake included.

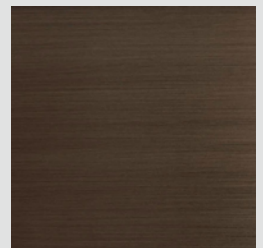
**WIRING:**  
3', 15', 25', 18/2 cable.

LIFETIME



WARRANTY

FINISH



Weathered brass

*Nightscaping*®  
SINCE 1959

# Valletta

## Brass Drop-In

The Valletta Sidera Series tiki torch with G4 bi-pin, LED, drop-in luminaire by Nightscaping® is the perfect light fixture to create that resort-life feeling in your very own backyard. The Valletta tiki torch has a reflective white powder-coated interior helps the fixture to illuminate almost any outdoor living space. Its removable wick assembly and threaded collar make the torch easy to remove and fill. The braided fiberglass wick will not unravel or blow out in windy conditions.



7.9" → 65.7"  
Width      Height



## Specifications

### HOUSING:

Cast brass. Tiki torch top.

### SOCKET/LAMP HOLDER:

Fixed ceramic G4 bi-pin socket.

### LENS:

Clear glass lens.

### LAMP TYPE:

12V bi-pin. LED recommended. 35W halogen or 6W LED maximum.

### MOUNTING:

1/2" NPT threaded stem. Heavy-duty composite stake included with slotted brass threaded insert for easy servicing.

### WIRING:

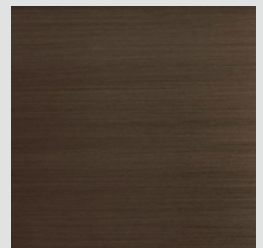
25ft 18/2AWG, SPT-2, UL Listed, copper wire that is protected by Polyvinyl Chloride (PVC).

LIFETIME



WARRANTY

FINISH



Weathered brass

Nightscaping®  
SINCE 1959

# Barcelona

## Brass Drop-In

The Barcelona Sidera Series G4 bi-pin, LED, drop-in luminaire by Nightscaping® is ideal for illuminating pathways and walking areas. The Barcelona luminaire is a solid cast brass path-light that has an enclosed socket. The cast brass hat with reflective white powder-coated interior helps the fixture to illuminate almost any garden or walking area.



7"



22.5"

Width

Height

## Specifications

### HOUSING:

Cast brass.

### SOCKET/LAMP HOLDER:

Fixed ceramic G4 bi-pin socket.

### LENS:

Clear glass lens.

### LAMP TYPE:

2W G4 BIPIN LED.

### MOUNTING:

ABS 8" stake included.

### WIRING:

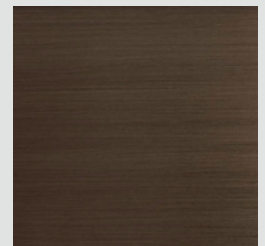
3', 15', 25', 18/2 cable.

LIFETIME



WARRANTY

FINISH



Weathered brass

Nightscaping®  
SINCE 1959



# Arendal

Brass Drop-In

The Arendal Sidera Series G4 bi-pin, LED, drop-in luminaire by Nightscaping® is ideal for illuminating pathways and walking areas. The Arendal luminaire is a solid cast brass path-light that has an enclosed socket. The cast brass hat with reflective white powder-coated interior helps the fixture to illuminate almost any garden or walking area.



8.5" → 22"  
Width      Height



## Specifications

**HOUSING:**  
Cast brass.

**SOCKET/LAMP HOLDER:**  
Fixed ceramic G4 bi-pin socket.

**LENS:**  
Clear glass lens.

**LAMP TYPE:**  
2W G4 BIPIN LED.

**MOUNTING:**  
ABS 8" stake included.

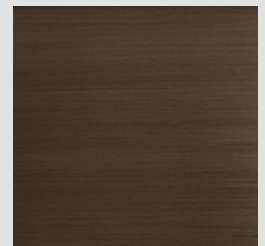
**WIRING:**  
3', 15', 25', 18/2 cable.

LIFETIME



WARRANTY

FINISH



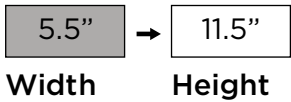
Weathered brass

*Nightscaping*®  
SINCE 1959

# Luxembourg

## Brass Drop-In

The Luxembourg Sidera Series G4 bi-pin, LED, drop-in luminaire by Nightscaping® is ideal for illuminating pathways and raised garden beds. The Luxembourg luminaire is a solid cast brass path-light that is short in stature which allows it to blend seamlessly into the landscape. The cast brass hat with reflective white powder-coated interior helps the fixture to illuminate almost any garden area.



## Specifications

**HOUSING:**  
Cast brass.

**SOCKET/LAMP HOLDER:**  
Fixed ceramic G4 bi-pin socket.

**LENS:**  
Clear glass lens.

**LAMP TYPE:**  
G4 BIPIN SEALED LED.

**MOUNTING:**  
ABS 8" stake included.

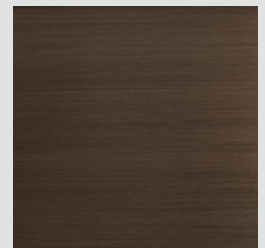
**WIRING:**  
3', 15', 25', 18/2 cable.

LIFETIME



WARRANTY

FINISH



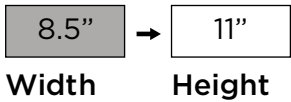
Weathered brass

*Nightscaping*®  
SINCE 1959

# Naples

## Brass Drop-In

The Naples Sidera Series G4 bi-pin, LED, drop-in luminaire by Nightscaping® is ideal for illuminating pathways and walking areas. The Naples luminaire is a cast brass path-light that has an enclosed socket. The cast brass hat with reflective white powder-coated interior helps the fixture to illuminate almost any outdoor living space.



## Specifications

**HOUSING:**  
Cast brass.

**SOCKET/LAMP HOLDER:**  
Fixed ceramic G4 bi-pin socket.

**LENS:**  
Clear glass lens.

**LAMP TYPE:**  
12V bi-pin. LED recommended. 35W halogen or 6W LED maximum.

**MOUNTING:**  
1/2" NPT threaded stem. Heavy-duty composite stake included with slotted brass threaded insert for easy servicing.

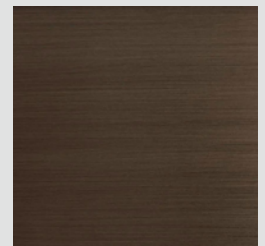
**WIRING:**  
25ft 18/2AWG, SPT-2, UL Listed, copper wire that is protected by Polyvinyl Chloride (PVC).

LIFETIME



WARRANTY

FINISH



Weathered brass

*Nightscaping*®  
SINCE 1959

# Specialty Lights

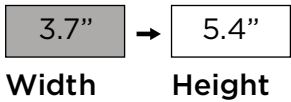




# Caspian

## Brass Drop-In

The Monaco Sidera Series G4 bi-pin, LED, drop-in luminaire by Nightscaping® is ideal for illuminating pathways and walking areas. The Monaco luminaire is a cast brass path-light that has an enclosed socket. The cast brass hat with reflective white powder-coated interior helps the fixture to illuminate almost any outdoor living space.



Width

Height

## Specifications

### HOUSING:

Cast Brass.

### SOCKET/LAMP HOLDER:

Ceramic bi-pin socket with stainless steel retaining springs.

### LENS:

Clear glass lens.

### LAMP TYPE:

12V MR-16. LED recommended. 35W halogen or 7W LED maximum.

### MOUNTING:

Cast brass mounting plate with thumb screw adjustment.

### WIRING:

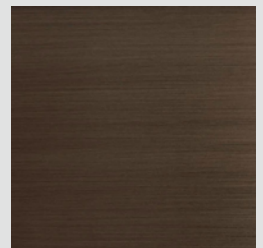
25ft 18/2AWG, SJT, UL Listed, copper wire that is protected by Polyvinyl Chloride (PVC).

LIFETIME



WARRANTY

FINISH



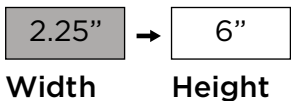
Weathered brass

*Nightscaping*®  
SINCE 1959

# Providence

## Brass Drop-In

The Providence Sidera Series sconce dual MR16, LED, drop-in luminaire by Nightscaping® is ideal for illuminating arbors, pillars, and outdoor living spaces. The Providence wall sconce light is equipped with two MR16s; one MR16 facing up and one MR16 facing down. It can be surface mounted to any surface which makes it a very versatile light fixture.



## Specifications

**HOUSING:**  
Cast brass.

**SOCKET/LAMP HOLDER:**  
Two fixed ceramic bi-pin sockets with stainless steel retaining springs.

**LENS:**  
Clear tempered glass lens.

**LAMP TYPE:**  
Two 12V MR16. LED recommended. 35W halogen or 7W LED maximum.

**MOUNTING:**  
1/2" NPT threaded stem. Heavy-duty composite stake included with slotted brass threaded insert for easy servicing.

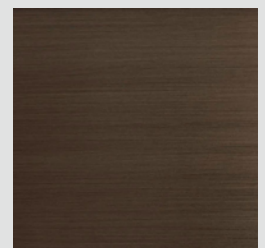
**WIRING:**  
25ft 18/2AWG, SPT-2, UL Listed, copper wire that is protected by Polyvinyl Chloride (PVC).

LIFETIME



WARRANTY

FINISH



Weathered brass

*Nightscaping*®  
SINCE 1959



# Conestoga

Brass Drop-In

The Conestoga Sidera Series MR16 sconce, LED, drop-in luminaire by Nightscaping® is ideal for downlighting arbors, pillars, and outdoor living spaces. The Conestoga wall sconce light is equipped with one downward facing MR16. It can be surface mounted to any surface which makes it a very versatile light fixture to softly illuminate areas from above.



2.25"



3.5"

Width

Height

## Specifications

### HOUSING:

Cast brass.

### SOCKET/LAMP HOLDER:

Fixed ceramic bi-pin socket with stainless steel retaining spring.

### LENS:

Clear tempered glass lens.

### LAMP TYPE:

12V MR16. LED recommended. 35W halogen or 7W LED maximum.

### MOUNTING:

1/2" NPT threaded stem. Heavy-duty composite stake included with slotted brass threaded insert for easy servicing.

### WIRING:

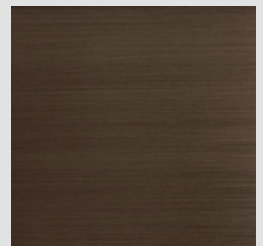
25ft 18/2AWG, SPT-2, UL Listed, copper wire that is protected by Polyvinyl Chloride (PVC).

LIFETIME



WARRANTY

FINISH



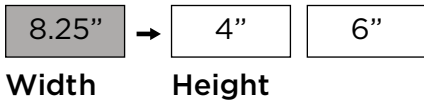
Weathered brass

*Nightscaping*®  
SINCE 1959

# Fulton

## Brass Drop-In

The Fulton Sidera Series sconce dual bi-pin, LED, drop-in luminaire by Nightscaping® is ideal for illuminating arbors, pillars, and outdoor living spaces. The Fulton wall sconce light is equipped with two G4 bi-pin sockets; one G4 bi-pin facing up and one G4 bi-pin facing down. It can be surface mounted to any surface which makes it a very versatile light fixture.



## Specifications

**HOUSING:**  
Brass.

**SOCKET/LAMP HOLDER:**  
Two fixed ceramic bi-pin sockets.

**LENS:**  
Frosted glass lens.

**LAMP TYPE:**  
Two 12V MR16. LED recommended. 35W halogen or 7W LED maximum.

**MOUNTING:**  
Surface mounting plate.

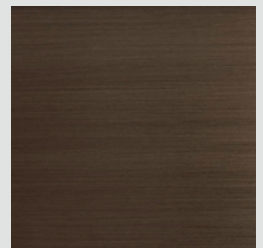
**WIRING:**  
25ft 18/2AWG, SPT-2, UL Listed, copper wire that is protected by Polyvinyl Chloride (PVC).

LIFETIME



WARRANTY

FINISH



Weathered brass

*Nightscaping*®  
SINCE 1959